

GENERAL NOTES

UNIT WGT: 240 LBS.

DIMENSIONS ARE IN INCHES
TOLERANCES: LINEAR: $\pm 1/16$ "
ANGULAR: $\pm 1^\circ$



SHEET SIZE
B

SCALE
1:24

REV



Kay Park Rec.

CONFIDENTIAL DRAWING.
INFORMATION IS NOT TO BE COPIED OR
DISCLOSED TO OTHERS WITHOUT
CONSENT OF KAY INDUSTRIES.
SPECIFICATIONS SUBJECT TO CHANGE
WITHOUT NOTICE.

DRAWN BY

DAT

5/8/2018

DESC:

SIDE/END WHEEL CHAIR ACCESSIBLE TABLE WITH
FIBERGLASS SEATS ANT TOP

APPROVED

MATL:

LAST SAVED

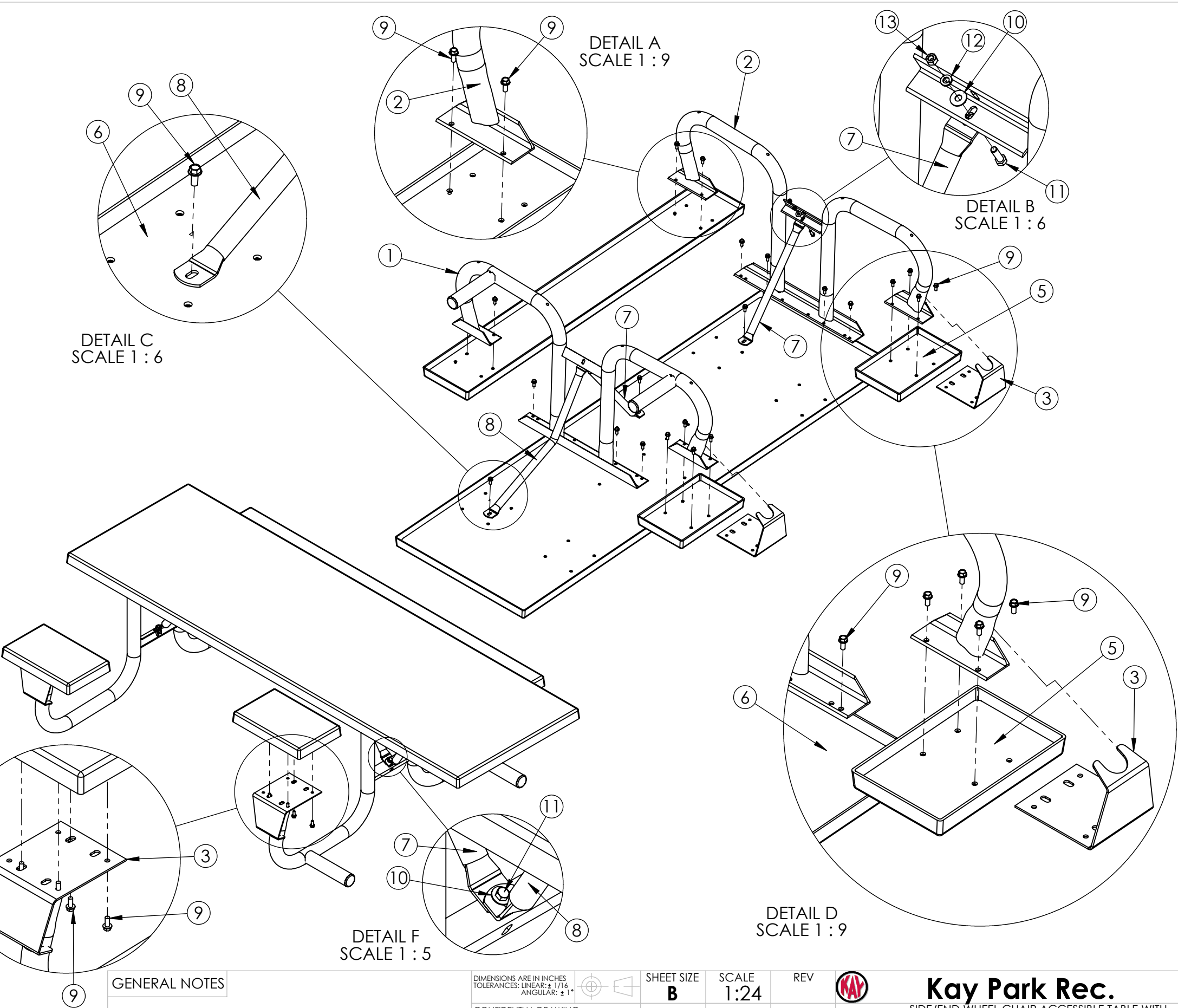
davet

5/10/2018

PART NO: 8J2GFSEWC

NO.	PART NUMBER	DESCRIPTION	MATERIAL	QTY.
1	J2EWC-SA1	J2 END WHEEL CHAIR WELD ASSEMBLY LEG		1
2	J2-SA1	J2 LEG WELDED SUB ASSEMBLY		1
3	IWC-37	J2 WC SEAT STABALIZER	STEEL SHEET 7 GA. (.1793)	2
4	6IF-8	6' FIBERGLASS SEAT ASSY WITH MDF CORE		1
5	1IWCF-8	16" FIBERGLASS HC COMPANION SEAT WITH MDF CORE		2
6	8IPTF-9 (Assy)	8' FIBERGLASS TOP		1
7	IWC-5	WC TABLE CROSS BRACE 25 1/2"	1 5/16"OD 14 GA. (.083) ROUND MECH TUBING A513	2
8	IEWC-5	TABLE WC END BENT TUBE	1 5/16"OD GALV TUBE 14 GA A513	1
9	IN-HWMS 0.375-16x0.875x0.875-N	HEX HEAD FLANGED BOLT 3/8"-16x 7/8"		23
10	FLATW-3/8	FLAT WASHER 3/8"		4
11	HBOLT 0.3750-16x1.25x1-N	3/8"-16 x 1 1/4" HEX BOLT	Zinc Plated Steel	2
12	LOCKW-3/8	LOCK WASHER 3/8"	Zinc Plated Steel	2
13	HNUT 0.3750-16-D-N	HNUT 0.3750-16-D-N		2
14	CAP-345	PLASTIC END CAP FOR 2 3/8" OD PIPE	HDPE LIGHT GRAY	2

1. Place the 8 Ft. Top Upside Down On Something That Will Not Mar the Table Surface. Place The Left Side Leg Assembly (No Feet Extensions) On the Pre-Drilled Holes Nearest the End of The Table (About 9"). The Top Angle Holes and Leg Space Hole (For The Table Brace) Should Face the Center Of the Table. Attach With 3/8"-16x 7/8" Hex Head Flanged Bolt.
2. Place the Leg With Anti-Tip Leg Extensions Facing Outward Towards the Table End As Shown.
3. The Two Short Tube Braces and One Bent Table End Brace Should Be Attached From The Leg To the Pre-Drilled Holes In the Table Top. Use The 3/8"-16x 7/8" Hex Head Flanged Bolts to Secure the Tubing to the Table Top and the 3/8"-16x 1 1/4" Hex Head Bolts to Secure to the Table Leg Frame.
4. Turn the Table Over and Install the 6 Ft. Fiberglass Seat with the 3/8"-16x 7/8" Hex Flanged Bolt
5. Line Up the Seat Support Plates as Well a s the 16" Fiberglass Seats As Shown. Make Sure the Coped End Of the Seat Support Plate is Placed on the Outside Of the Tubing Leg. Align Holes As shown, Assembly With 3/8"-16x 7/8" Hex Head Flanged Bolt.



CARE & MAINTENANCE FOR KAY PARK
Tables periodically (at least once a year) check to make sure all ,bolts and nuts are in place and tight. Replacement parts may be purchased by calling Kay Park-Rec Corp. at 1-800-553-2476.

GENERAL NOTES

DIMENSIONS ARE IN INCHES
TOLERANCES: LINEAR: ± 1/16"
ANGULAR: ± 1°

CONFIDENTIAL DRAWING.
INFORMATION IS NOT TO BE COPIED OR
DISCLOSED TO OTHERS WITHOUT
CONSENT OF KAY INDUSTRIES.
SPECIFICATIONS SUBJECT TO CHANGE
WITHOUT NOTICE.

SHEET SIZE
B

DRAWN BY
DAT

APPROVED

LAST SAVED
davet

SCALE
1:24

REV

5/8/2018

5/10/2018



Kay Park Rec.

SIDE/END WHEEL CHAIR ACCESSIBLE TABLE WITH
FIBERGLASS SEATS ANT TOP

MATL:

PART NO: 8J2GFSEWC