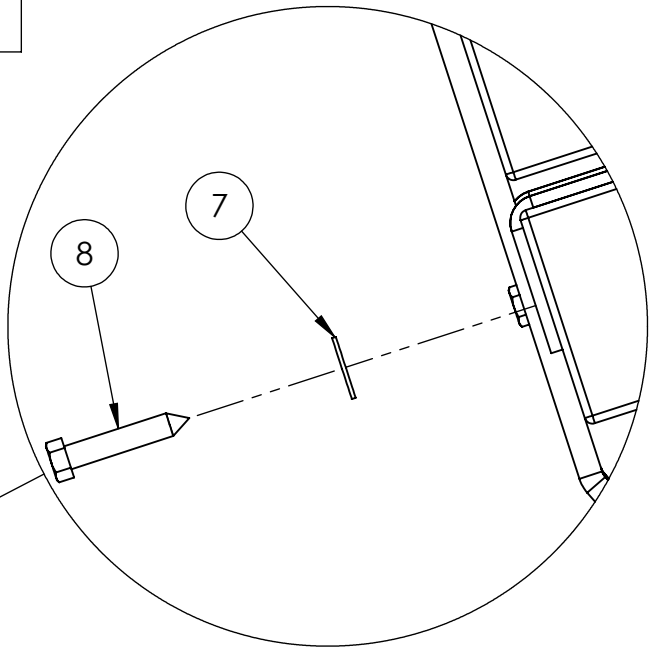
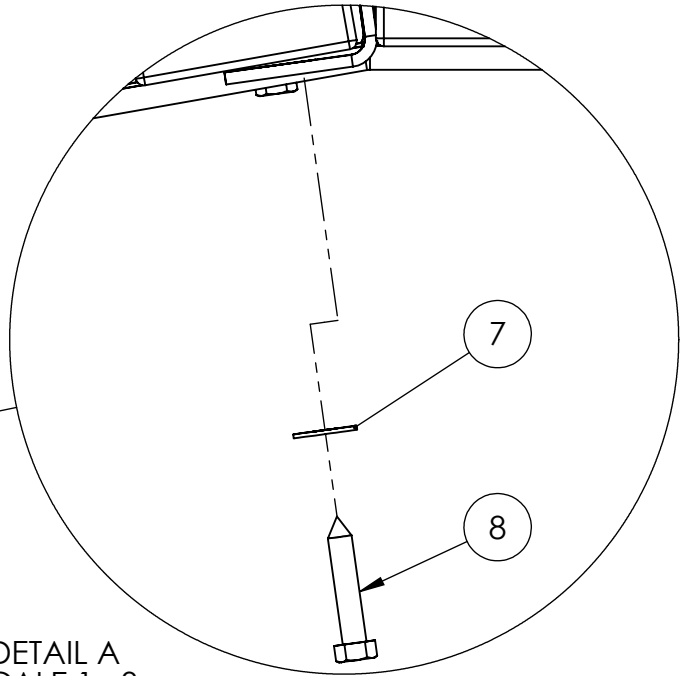


NOTE:
THIS PART NUMBER INCLUDES 2 ARMRESTS AS
WELL AS ALL HARDWARE FOR INTALLATION
ONTO A 3"X4" EQUIPPED BENCH.

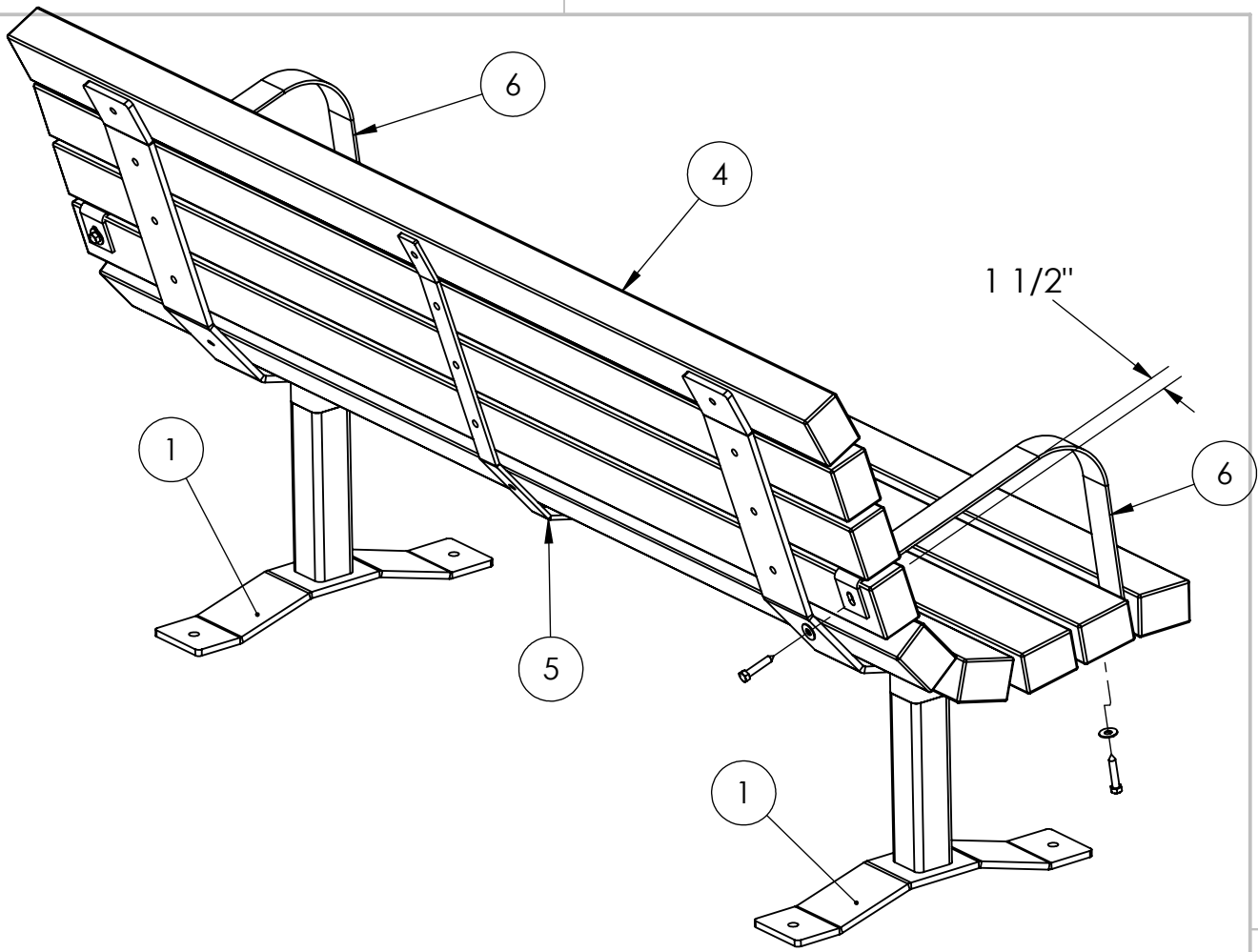
NO.	PART NUMBER	DESCRIPTION	MATERIAL	QTY.
1	CB-228	CONTOUR BENCH BASE	3/8" x 4" STEEL FLAT A36	2
2	CB-229	CONTOUR BENCH LEG PEDESTAL	STEEL SQ TB 2-1/2"x3/16" A500	2
3	Copy of CB-227^CB-SA1	CONTOUR BENCH FRAME	STEEL SHEET/PLATE 3/8"x4" A36	2
4	6IRP3-7	3"x 4" RECYCLED PLASTIC PLANK	HDPE RECYCLED	9
5	CB-227M	CB MIDDLE BENCH FRAME	STEEL 38" x 1 1/2" x 1/4" FLAT	1
6	CB-226	CONTOUR BENCH ARM REST	3/16"x 2" STEEL STRIP A36	2
7	Regular FW 0.375	3/8" REGULAR FLAT WASHER	CARBON STEEL ZINC COATED	4
8	HLSCREW 0.3750x2	3/8" HEX HEADx 2" LAG SCREW		4



DETAIL B
SCALE 1 : 3



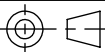
DETAIL A
SCALE 1 : 3



ARM RESTS FOR 3"x 4" SLATS RECYCLED PLASTIC OR PINE PLANKS

GENERAL NOTES

DIMENSIONS ARE IN INCHES
TOLERANCES: LINEAR: $\pm 1/16$
ANGULAR: $\pm 1^\circ$



SHEET SIZE
B

SCALE
1:24

REV



K Industries, Inc.

CONFIDENTIAL DRAWING.
INFORMATION IS NOT TO BE COPIED OR
DISCLOSED TO OTHERS WITHOUT
CONSENT OF KAY INDUSTRIES.
SPECIFICATIONS SUBJECT TO CHANGE
WITHOUT NOTICE.

DRAWN BY

FJG

3/3/2017

DESC:

ARM REST SET FOR 3" X 4" PLANKS

APPROVED

MATL:

LAST SAVED

fredg

9/17/2019

PART NO: ARCB34

PATH TO PART OR ASSM - ARCB34

S:\CADD\RWGS\Solidworks\Benches\Contour & Flat\

Configuration - Spec

9/17/2019 3:59:20 PM

SHEET 2 OF 2