



KAY PARK RECREATION

MAKING PLACES PEOPLE FRIENDLY • **SINCE 1954**

(800)553-2476 • sales@kaypark.com

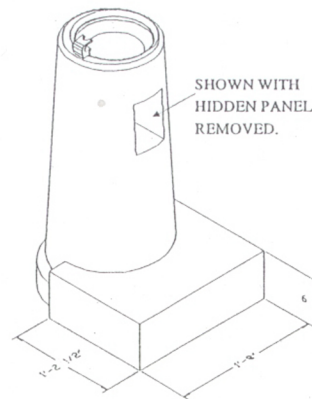
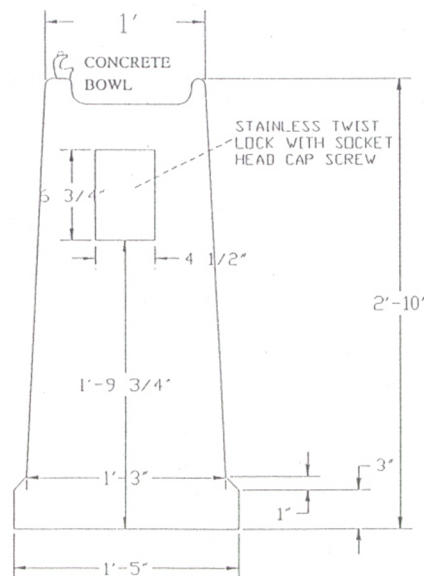
1301 Pine St. Janesville, IA 50647

Drinking Fountain

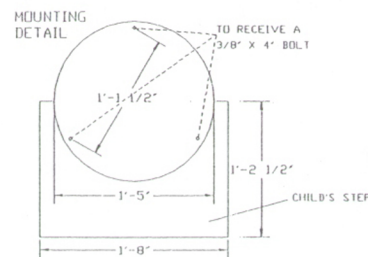
Model #: **CDFOCS**

Weight: **210 Lbs**

Material: **Concrete**



Shown with Optional Child Step



MODEL:
DF-PB
DRINKING FOUNTAIN
WEIGHT : 210 LBS

GENERAL SPECIFICATIONS

I. MANUFACTURER'S QUALIFICATIONS

Petersen Mfg. maintains at all times a quality control program as herein out-lines so as to insure that all precast meets all requirements as specified under physical requirements. All precast shall be manufactured by skilled workmen who have had at least five (5) years experience in similar work and supervised by forman certified by the ACI.

II. MANUFACTURING

All precast work shall be true to dimensions and have clean, accurate arrises and details faithfully executed. Reinforcing steel shall conform to ASTM 615 and deformations shall conform to ASTM-M-305. All precast work shall have a minimum compressive strength of 5,000 psi at 28 days of age when tested by means of cylinder molds (6 x 12) from the materials. There shall be a maximum of 4 - 6% air entertainment for all precast according to ASTM standards.

III. MOLDS

The forms for the precast units shall be constructed of metal of fiberglass laminated designed to withstand casting pressures without distortion. All anchors, inserts, bolts, etc. will be placed and secured in the forms as required for the attachment and handling of the units. These shall be clamped so as to hold them in position during fabrication.

IV. PHYSICAL CHARACTERISTICS

All exposed surfaces are treated to remove the surface matrix and expose the aggregate produced by chemical retardant - not sandblasting. All precast shall have the water repellent sealer treatment applied in strict accordance with manufacturer's specifications. All tolerances shall be within 1/8" of specified dimensions, designed for structural analysis and calculations.

V. COLOR

Color to be uniform throughout as approved by owner or specifier in accordance with manufacturer's recommendation's.

VI. MATERIALS

Portland Cement: ASTM C150 Type 1 or 3
All aggregate to meet ASTM C33 specifications.

VII. REQUIRED MATERIALS FOR APPROVAL

- Shop drawings with dimensions, general construction component parts, anchoring details and installation instructions.
- Samples upon request of architect.
- Complete data on manufacturer's specifications and technical information.

VIII. APPROVED MANUFACTURER:

Petersen Concrete Leisure Products
Division of Petersen Mfg. Company, Inc.
1527 4th Avenue South, P.O. Box 664
Denison, Iowa 51442 712 - 263 - 2442

